

## BRASO

### Features:

- Tubular steel base available in black or silver finish
- 300 lb. weight capacity
- Flared arms for added comfort
- High-Resilient Seat Foam
- In-stock fabric options available for quick ship

Cover feature: Model 2501 shown in Continuum Saffron fabric

EXPLORE  
BRASO SERIES



### Braso Lounge Seating:

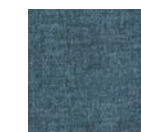


2501 Lounge  
Silver Base  
31.5" W x 30.75" D x 38" H



2501 Lounge  
Black Base  
31.5" W x 30.75" D x 38" H

### In-stock Fabrics:



Azure #21



Cherry #43



Glow #148



Earth #27



Ash #204







## Lounge Seating

Model 2510

### 4-Leg with Glides Model 2510

30" W x 33" D x 36" H

Seat 21" W x 19.5" D

Seat Height 16.5"

Arm Height ?"

Back 20" W 24" H

COM: 3.25yds. Carton: ? Cu.Ft.

Ship Weight: 53 lbs.

### Features:

- Tubular Steel Base
- Relaxed Seat Geometry
- 300+ upholstery options available
- Black or Silver base
- High-Resilient foam
- Flared Arms for added comfort
- In-stock fabric options for quick ship
- Standard Metal Leg Finishes

### Standard Metal Leg Finishes:

- S- Silver
- B- Black

### Standard Metal Base Finishes:

- S- Silver frame finish
- B- Black frame finish

Please visit [OCISeating.com](http://OCISeating.com) for more information.

### Optional / Upgrades:

- Units are shipped with base off, necessary hardware is provided.

### Optional Fabrics:

- When combining different grade
- When combining fabric of the same

### In-stock Fabric Options:



Azure #21



Cherry #43



Ash #204



Glow #148



Earth #148

### Shipping:

The Braso Line is delivered pre assembled by the OCI Team of assemblers, bagged and wrapped for protection. Ships in a carton or blanket wrapped where available.

### Fire Rating:

- All fabric and foam is tested and certified, meeting California Technical Bulletin 117 (CAL 117) standards

### Product Durability:

- Designed for an active weight capacity of 300 lbs per seat
- Meets and exceeds all testing standards for safety and durability
- Manufactured in the U.S.A. under stringent quality standards

### Environmental:

- All foam is produced without using any ozone depleting chloroflouro chemicals.
- All wood used is TSCA compliant to help reduce and or eliminate formaldehyde emissions.

### Sustainability Pledge:

OCI Seating is committed to sustainability. We craft our chairs with eco-friendly materials, use eco-friendly manufacturing processes, and partner with like-minded vendors. Because every seat matters-for you, and our planet.



[ociseating.com](http://ociseating.com)