



# ENCOUNTER™ POWERBEAM

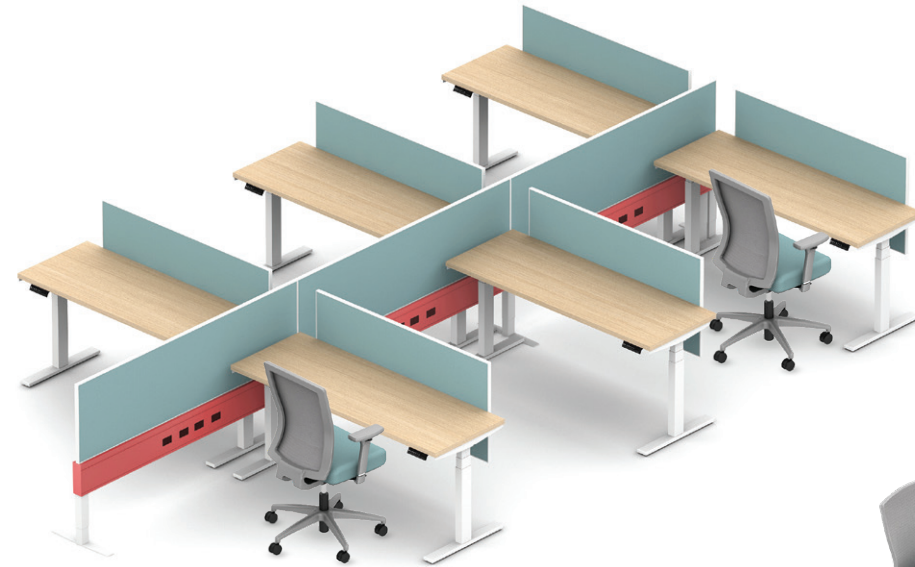
Beam-based Power Solution

**AIS**

# ONE SIMPLE BEAM SO MANY WAYS TO FILL THE WORKSPACE



Design with or without gallery panels or storage. You're free to plan whatever kind of space users need.



Just two supports for every 96 inches makes PowerBeam a clean, cost-effective way to design a flexible workspace.



Have a meeting? Pull up a table... we've got power.

Choose from straight, 90° or 120° layouts.



PowerBeam works with Calibrate Height Adjustable Tables, concealing legs within storage to save space and simplify the look.



PowerBeam brings power to fixed height work stations and gracefully extends to meeting space with an optional power puck.



The hunt for outlets is over. With up to 8 receptacles in every beam, the power is everywhere.



Reduce vertical supports by specifying PowerBeam mounted on Calibrate Storage.

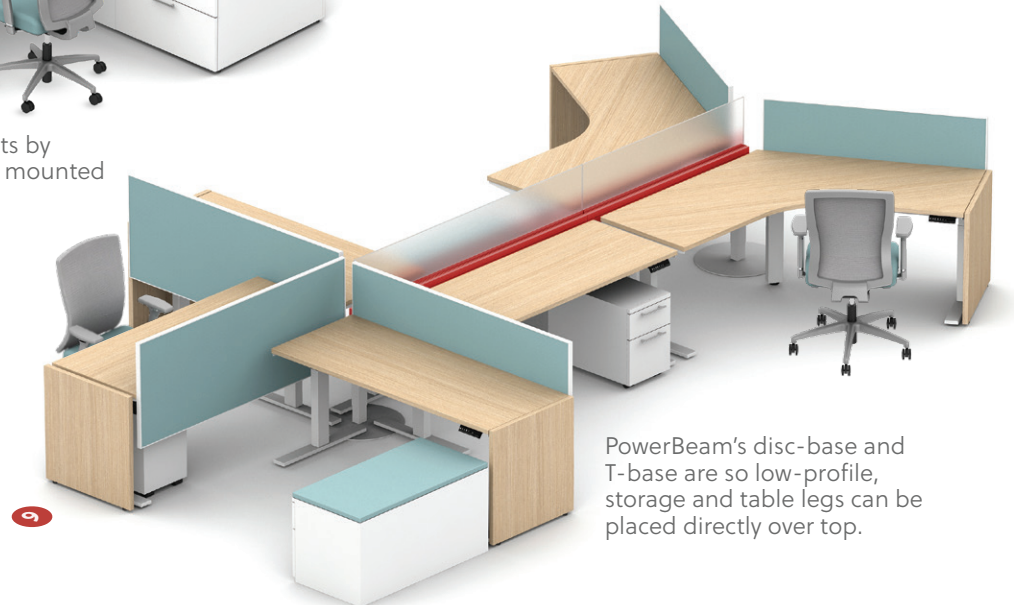
Less really can be more. With a value-engineered solution, a short straight section can extend power beyond the beam and even create 90° and 120° layouts.



Place tables perpendicular to the beam to make the most of your space.



Place tables parallel to the beam to optimize space and maximize workflow.



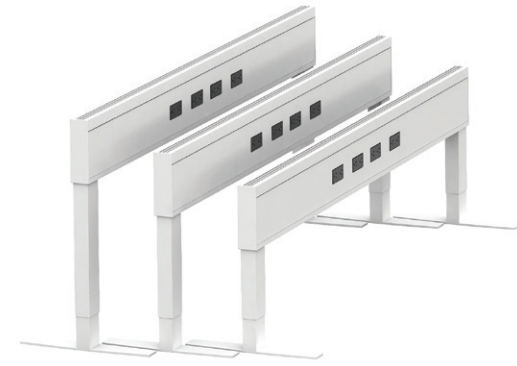
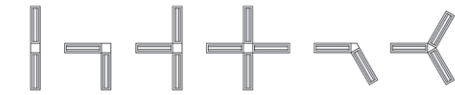
PowerBeam's disc-base and T-base are so low-profile, storage and table legs can be placed directly over top.

1

### BEAM

#### Flexible dimensions to fit every space

- Sleek profile: 2.5 inches wide by 8 inches tall
- 21, 25 or 29 inch height
- 36 to 96 inch runs in 6 inch increments
- Connections: Straight, 90° and 120°
- 2 inches of leveling



#### Roll up and get to work

Stay for a day or a week. Just plug in and then roll out when you're done. Your space. Your way.



2

### SUPPORT OPTIONS

#### In addition to its leg options, PowerBeam can also be supported by storage or gallery panels

- 29-inch PowerBeam can be supported by storage, 18-inch T-base, disc-base or gallery panels
- 21- and 25-inch PowerBeam can be supported by the 12- or 18-inch T-base, disc-base or gallery panels
- The post leg can be used on corners. See price list for other uses
- Up to 96 inch runs with just two supports



## PRACTICALITY MAKES PERFECT

An agile, user-friendly set of options lets you tailor the details exactly to your needs. From size and materials to support elements, PowerBeam can be whatever you want it to be.

3

### POWER AND DATA ROUTING

- Connect power from floor, ceiling, or wall to every workstation
- Choose power access on one side or both
- Optional Vertical Wire Managers collect protect cables
- Optional powercord tray for easy cord management
- 4-circuit power



#### Plug in at the desk

Multiple styles provide options for power, USB and wireless charging.



4

### SCREENS

Choose to mount them directly to PowerBeam or to adjacent tables. Available in framed fabric, PET, markerboard, or glass (refer to pricelist for glass mount options).

#### Extend the power

Bring power beyond the workstation to an impromptu meeting space complete with whiteboards.



#### Easy leveling

Legs have two inches of adjustability making it simple to level, even across long runs.

5

### PERFECT COMBINATIONS

#### Paired with tables

PowerBeam can be paired with height adjustable tables or fixed tables.



#### Paired with storage

PowerBeam and Calibrate Height Adjustable Tables are ideal for high-density applications, allowing you to hide legs within the storage for a cleaner look.



### ENCOUNTER POWERBENCH

Height-Adjustable Benching using the shared Encounter power platform, PowerBench integrates a 2-stage height-adjustable leg into its base. The all-in-one solution of PowerBench gives ergonomic control to the end user for personalized comfort all day long.

Choose from the metal H-Leg for a clean, modern look, or the enclosed laminate base for an upscale, traditional look.



PowerBench with H-Leg



PowerBench with laminate base