



Product Features:

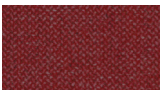
- Black metal base offers stability and durability
- Contemporary design features a unique pass-through seat for easy cleaning
- Great choice for breakroom and collaborative spaces
- Unique, cross-stitching detail adds high-end appeals
- Includes black floor glides to prevent scratching or marring of floor surfaces
- Family of chairs has a matching guest chair option for a complete look
- Sold as (2) per carton
- Limited Lifetime Warranty

Material Attributes:

- | | |
|-------------------|---------------|
| Frame | • Metal |
| Base / Legs | • Metal |
| Seat Cushion | • Foam |
| Seat Cover | • Fabric |
| Back Cover | • Fabric |
| Cushion Thickness | • 1.57" |
| Cushion Fill | • Molded Foam |
| Foam Density | • 4.00" |

Product Dimensions:

| | |
|------------------|--------------------------------|
| Overall | 22 1/8"W x 20 1/2"D x 42 1/8"H |
| Seat | 19 3/4"W x 17 3/4"D x 18 3/8"H |
| Product Weight | 19.86 lbs. |
| Weight Capacity | 275 lbs. |
| Floor to Seat | 30 1/8"H |
| Seat to Back | 12 5/8"H |
| Seat Back Width | 15 3/4"W |
| Seat Back Height | 12 5/8"H |



CN Crimson
Fabric



AP Asphalt
Fabric